

# What to consider when creating art for EganINK

## Notation guides

Enhance your creative by including lines or grids. Designs may be considered in two forms: guides and signage.

<b>A</b>	<b>Guides</b> are used to assist in drawing or writing neatly. These lines are to assist the user and not expected to be seen by viewers from a distance of more than 10'.	<b>E</b>	<b>Signage</b> must be clearly seen by viewers who may require visibility of the information from a distance of 20 feet or more.
<b>B</b>		<b>F</b>	
<b>C</b>		<b>G</b>	
<b>D</b>	Lines A-D are suitable for guides	<b>H</b>	Lines E-H are suitable for signage

## Grid Patterns

GRID DOTS Enlarged view>	GRID Enlarged view>	GRID GAPS Enlarged view>	SCHOOL LINES Enlarged view>

## Custom Design

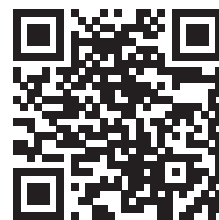
BAMBOO	PINK SKETCH
GLASS HALF FULL	Or send us your own design!

## Typeface Selection

The minimum size and maximum black density recommended for EganINK reproduction is demonstrated in the guide at the right. Your text will appear as shown or larger if desired. Text smaller than shown should be considered unreadable from a distance greater than 10'.

For additional technical information on how to supply EganINK files, please download the specifier's guide at [www.eganink.com](http://www.eganink.com)

- 1 **Poster**
- 2 **Serif**
- 3 **Sans Serif**



SmartPhone QuickResponse  
<http://eganink.com/submitArt.php>

**TIP:** Hold this page at a distance of 10' - 20' to understand legibility and size as it relates to your custom EganINK design.

**eVS**™ The unique tool for generating, capturing and presenting ideas.  
technology

EVS is a patent pending technology that features a non-permeable optical coating, fused to an opaque white polyester support base. The revolutionary surface is then laminated to a thick layer of polycarbonate to provide dimensional stability. The resulting laminate is manufactured into several formats to meet various customer requirements.

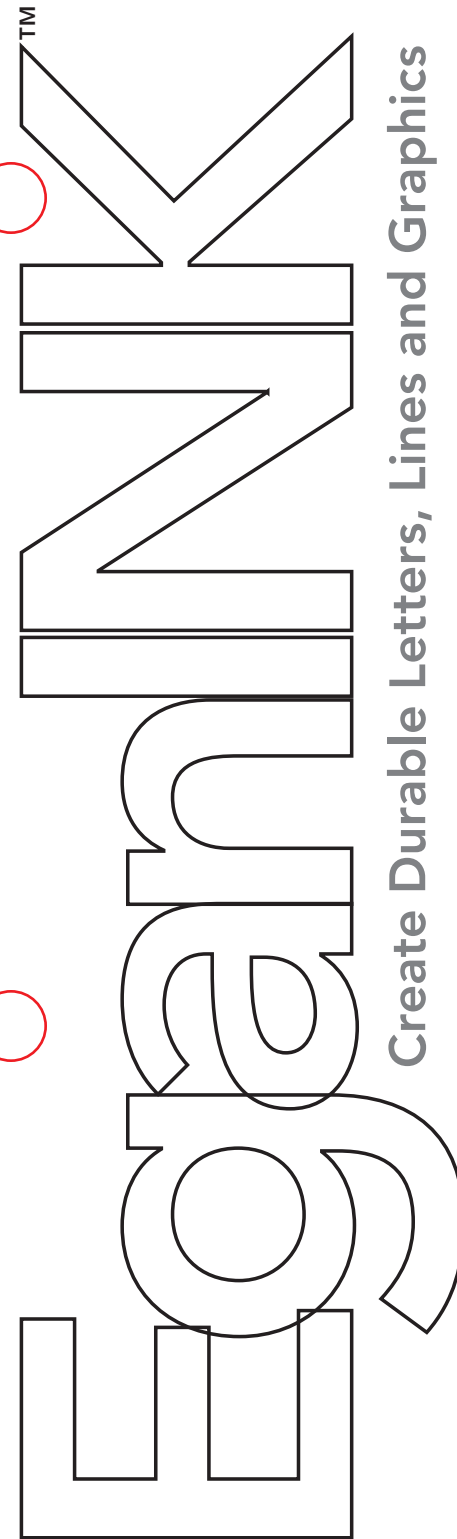


- Take the EVS Test-Drive**
1. Write on the EVS surface with a dry-erase marker.
  2. Wait a minute, then erase. Use the amazing EganCloth for the best results—it eliminates ghosting and dry-erase dust.
  3. If you used a permanent marker by mistake, grab a dry-erase marker and use it to scribble directly over the permanent marking, then just wipe it clean.
  4. EVS Projection also features a low-gloss surface that is ideal for projection.

**EGAN**  
Egan Visual, Inc.  
U.S. Eastern/Central States and Canada  
Tel 1-800-263-2387 or 905-851-2826  
Fax 1-888-609-8886 or 905-851-3426  
evi@egan.com

Egan Visual/West, Inc.  
U.S. Mountain and Western States  
Tel 1-800-826-1778 or 323-720-1336  
Fax 1-800-726-1314 or 323-720-1911  
eww@egan.com

**FSC** Mixed Sources  
Product group from well-managed forests, controlled sources and recycled wood or fiber  
www.fsc.org Cert no. SMC-COC-001731  
© 1996 Forest Stewardship Council



Create Durable Letters, Lines and Graphics

**MONTHLY PLANNER** January

**Goals for the month**

**Sponsored by** SUP

**Champions**

# EganINK™

## Durable Letters, Lines and Graphics

EganINK gives you the flexibility to make whiteboard concepts that really communicate your message, sponsor your brand or coach your team. Visit [www.eganink.com](http://www.eganink.com) for more information and ideas.

## What is EganINK?

Exclusive to Egan EVS **EganINK** is another whiteboard innovation developed by Egan Visual to create stunning grids, templates and lettering to your specification in a variety of colors. This innovative ink system provides high resolution multi-color application of letters/lines/graphics. Egan will appropriately reproduce your suitable high resolution image using the colors on page 3 for maximum dry-erase utility on any EVS product including Markerboards, Presentation Cabinets, Mobile Stands, VersaPRO, VersaMAG and custom cut VersaJOT. VersaJOT and EganINK combine to create custom shapes with custom artwork for a limitless opportunity to communicate your concepts and solutions. Versa Surfaces and EganINK will not be damaged by normal dry-erase marker use or permanent marker and are guaranteed-to-clean.

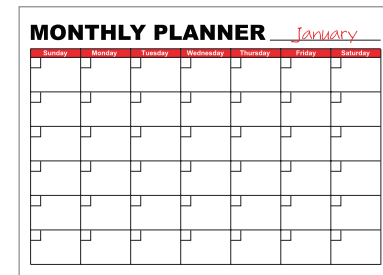
## Purpose Specific Templates

EganINK is ideal for branded markerboards for healthcare, business, education and promotions. The potential for premium and incentive product opportunities is limited only by your imagination giving you the flexibility to make whiteboard concepts that really communicate.

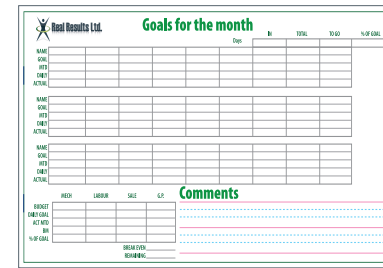
### BRACKETS



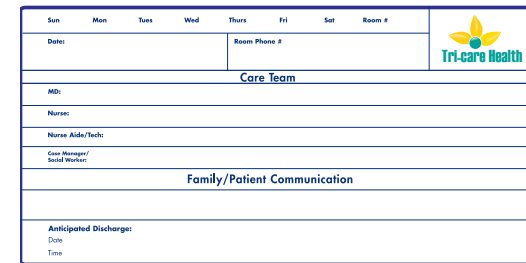
### PLANNER



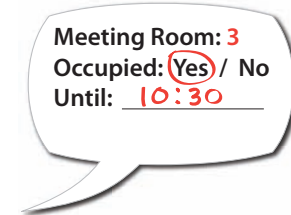
### GOALS



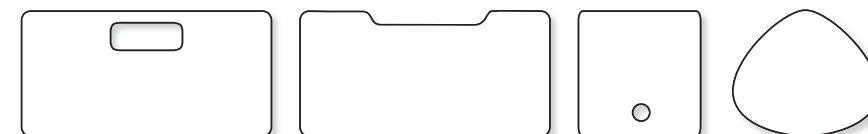
### CARE BOARD



### MEETING ROOM



### VJ1-CUSTOMCUT



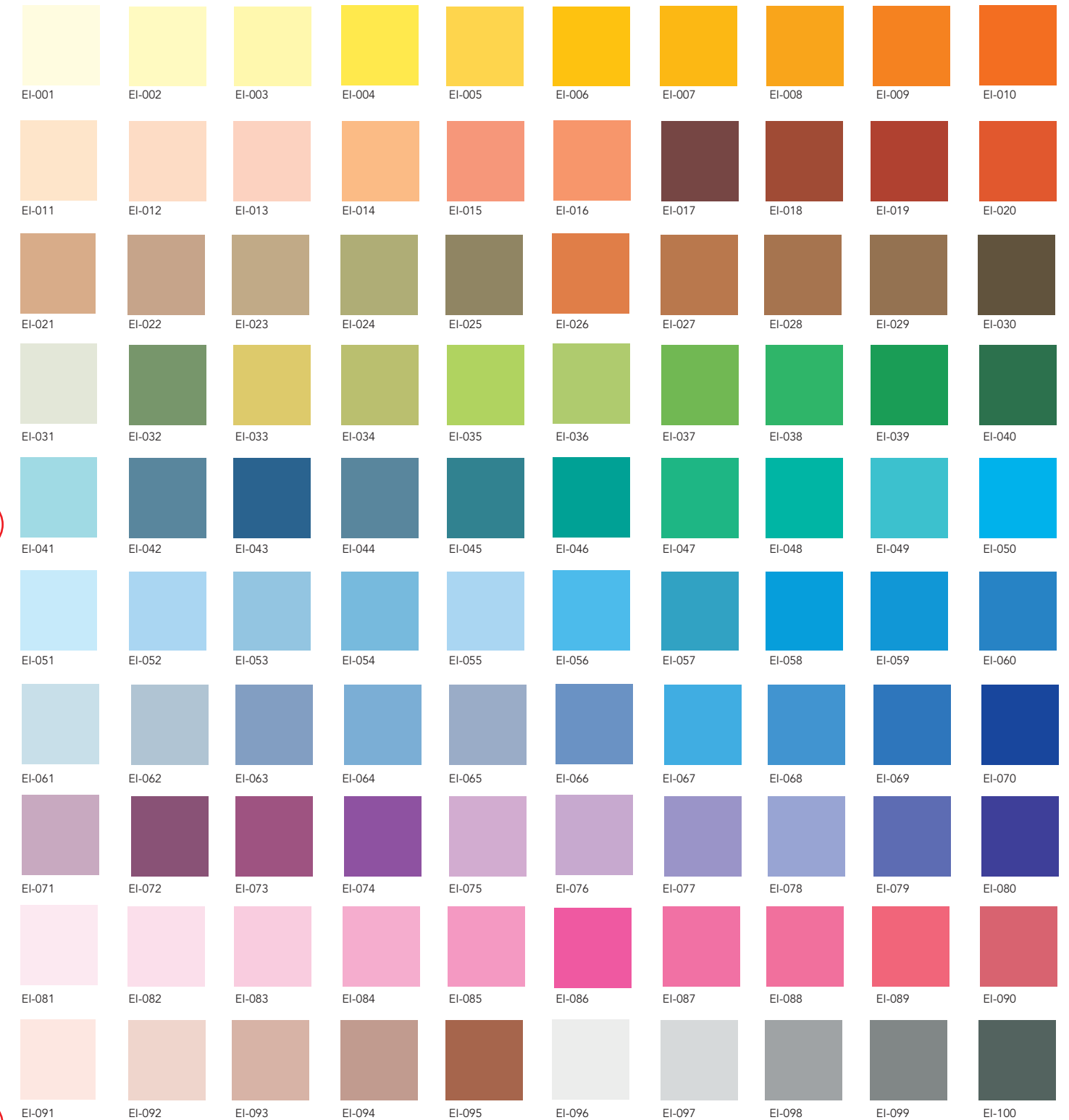
## GlassWrite™ plus EganINK

Let the light shine in! Exclusive to Egan Visual the GlassWrite Mobiles and GlassWrite Dimension product lines may be specified with full color continuous tone graphics printed in the interior layer of a tempered, frost glass markerboard.



## EganINK EVS Colors

The 100 EganINK colors below are ideal for creating strong EVS markerboard graphics that are dry-erasable and clearly seen from a distance. Please select your colors from the shades below. Custom colors and color matching is limited to the EganINK process and dry-erase compatibility. Please visit [www.eganink.com](http://www.eganink.com) or contact customer service 1-800-263-2387 for further details.



**EganINK** is a CMY (Cyan, Magenta, Yellow) printing process in which black will only be used on its own for line rules or text and never in combination with another color. Choose from the 100 vibrant sign colors to achieve your creative vision. Limitations of the high speed printing process used to create this brochure limit precise color matching. Request a sample where critical color assessment is required.

